

CERTIFIED LAND CORNER RECORDATION

'89 FEB 17 AM 10 27

DESCRIPTION OF CORNER EVIDENCE FOUND, AND ORIGINAL RECORD (if known)

1/4 S.15  
S.22  
T.13N., R.70W.  
6th P.M.

Found 1/2" rebar 0.2' East of 8"x8" granite stone projecting 6" above ground with 1/4 on North face. Used rebar as corner. Origin unknown.

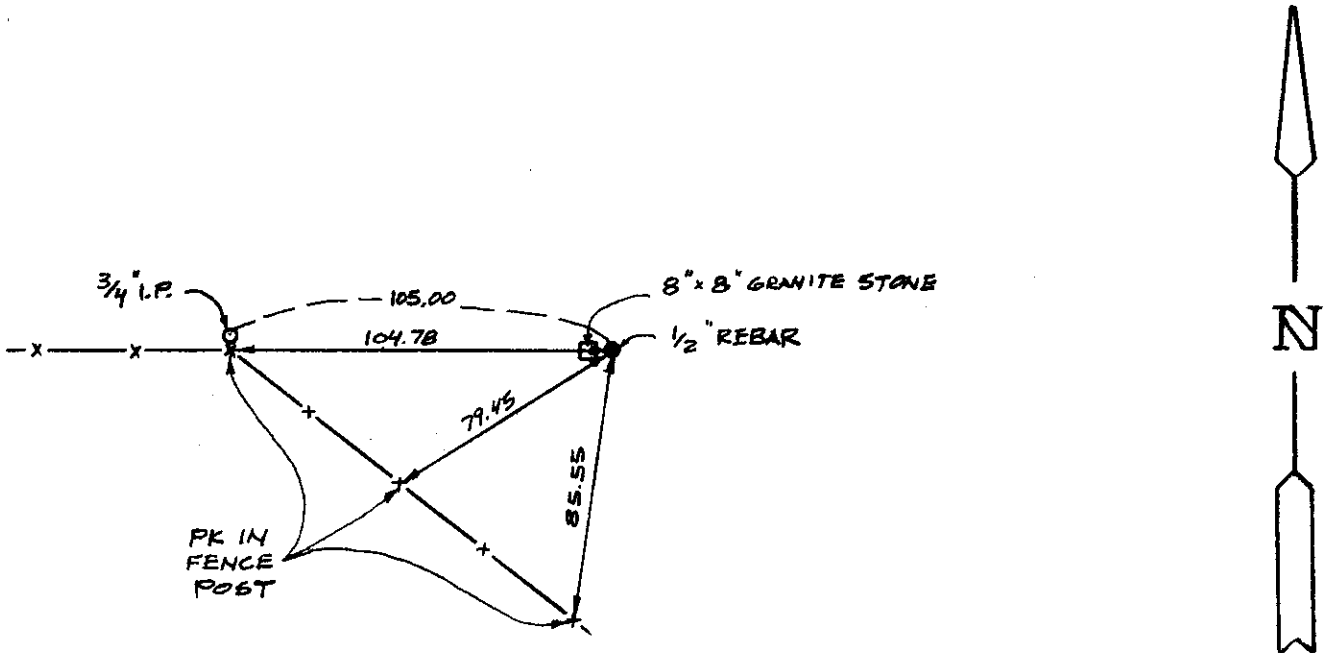
G.L.O. Record: Granite boulder 18"x12"x5" set by J. Wesley Hammond, October 22, 1872.

DESCRIPTION OF MONUMENT AND ACCESSORIES ESTABLISHED TO PERPETUATE THE ORIGINAL LOCATION OF THIS CORNER:

At the corner: Not remonumented.

Accessories : See ties below.

SKETCH, WITH COURSE AND DISTANCE TO ADJACENT CORNER IF DETERMINED IN THIS SURVEY. (May Sketch or Paste Reproduction on Reverse Side.)



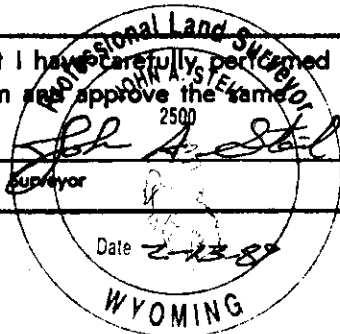
I, John A. Steil certify that I have carefully performed or reviewed the work done on the diagrammed corner as reported on this recordation form and approve the same.

Signature of Supervisor

L.S. 2500

Registration No.

STATE OF WYOMING,  
Office of Clerk and Recorder,  
County of \_\_\_\_\_



This "corner record" was filed for record on the \_\_\_\_\_ day of \_\_\_\_\_, 19\_\_\_\_, was noted on the cross-index plat and is assigned page No. \_\_\_\_\_, in book No. \_\_\_\_\_.

James C. Whitehead  
County Official

Gross Index No.	N-15	T. 13N	R. 70W	Mer. 6th
				Mer.
				Mer.
				Mer.
				Mer.
				Mer.
				Mer.